



**POWERFUL DIESEL CARGO LINER**



Above: THE WHEELHOUSE

# CASTLE

sails on Maiden Voyage

powerful diesel cargo liner afloat, sailed from Southampton  
Mail Service. Built by Swan, Hunter & Wigham Richardson  
India last October.

## CARGO

Refrigerated cargo space totals 380,000 cu. ft. with 203,000 cu. ft. of non-refrigerated space. Included in the former is 74,000 cu. ft. for the carriage of chilled meat.

Looking to the future, when container traffic is likely to develop, provision has been made for the carriage of 66 twenty-ton containers.

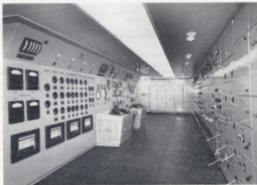
Ten tanks have been provided for the bulk carriage of 60,000 gallons of wine or other liquids.

The 40-ton Hallen derrick fitted to the main mast is the largest of its type in any ship in this country.

## ACCOMMODATION

Accommodation for the officers and crew is of an exceptionally high standard. All accommodation is air-conditioned and each member of the ship's company will have a single berth cabin. Private showers and toilets are provided for all senior officers, and sound reproduction equipment allows the relay to all cabins of taped music, records or radio programmes.

There is a permanent swimming pool on the boat deck, while in addition to the crew recreation room there is a hobbies room. This is equipped with Black and Decker power drills and accessories and other equipment will be provided when experience shows what is most needed.



Above: THE MAIN ENGINE CONTROL ROOM

Below: THE OFFICERS' DINING ROOM

